

Legend:

- Study Corridor
- Drain Flow
- Reported Sites

N

0 1,000 2,000

US Feet

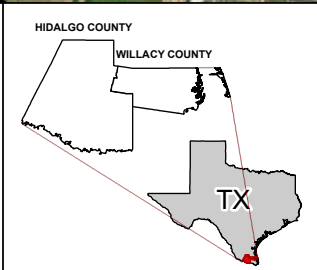
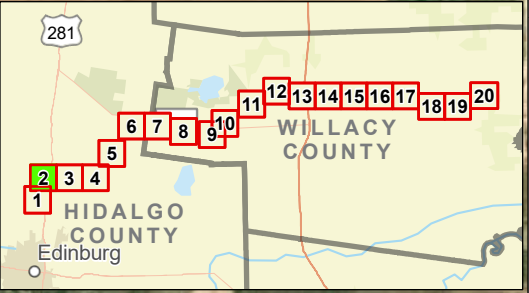


Exhibit 15 Alternative 1 Potential Hazardous Materials Sites Sheet 1 of 20 Raymondville Drain Project

Author : Joel F. Aguirre	Updated : 12/14/2023
--------------------------	----------------------

DISCLAIMER: RRP Consulting Engineers makes no guarantees as to the accuracy of data used in the construction of this map.

Path: S:\project\440800_ProposedRaymondvilleDrain\Drawings\Drawings.dwg



Legend:

- Study Corridor
- Drain Flow
- Proposed Detention Basin
- Reported Sites

N

0 1,000 2,000

US Feet



Exhibit 15

Alternative 1 Potential Hazardous Materials Sites

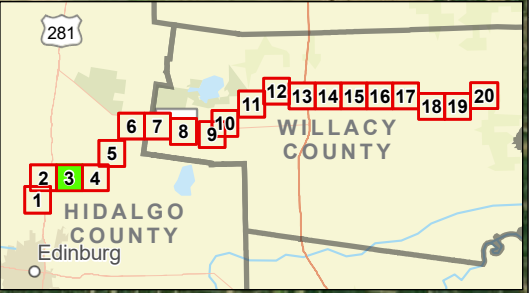
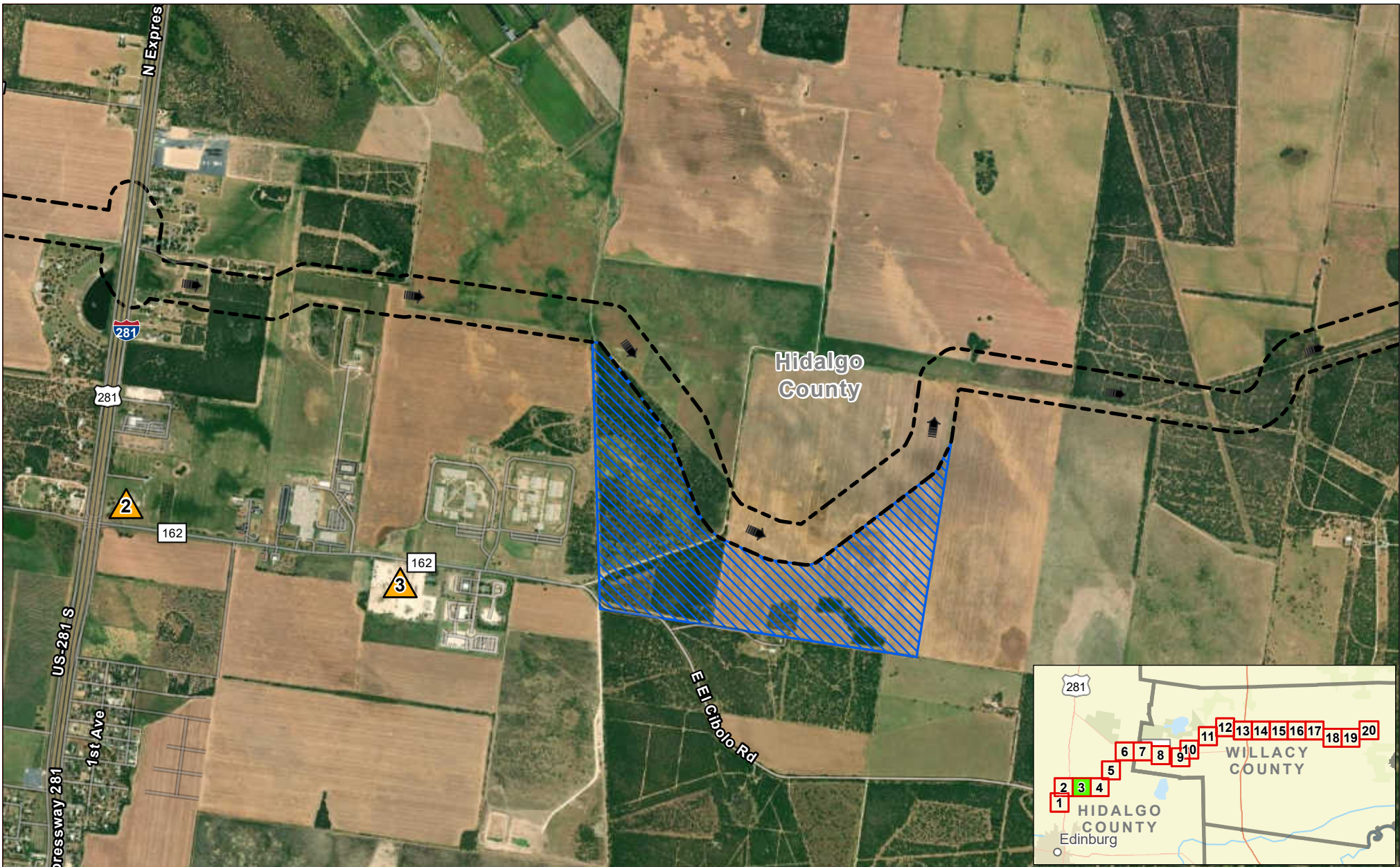
Sheet 2 of 20

Raymondville Drain Project

Author : Joel F. Aguirre	Updated : 12/14/2023
--------------------------	----------------------

DISCLAIMER: RRP Consulting Engineers makes no guarantees as to the accuracy of data used in the construction of this map.

Path: S:\project\440800_ProposedRaymondvilleDrain\Drawings\Draw_Sheet_02.dwg



Legend:

- Study Corridor
- Drain Flow
- Proposed Detention Basin
- Reported Sites

N

0 1,000 2,000

US Feet

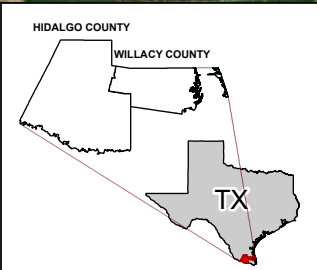
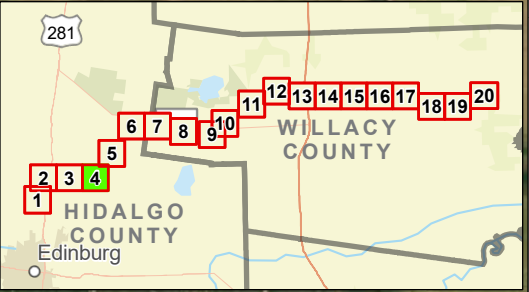
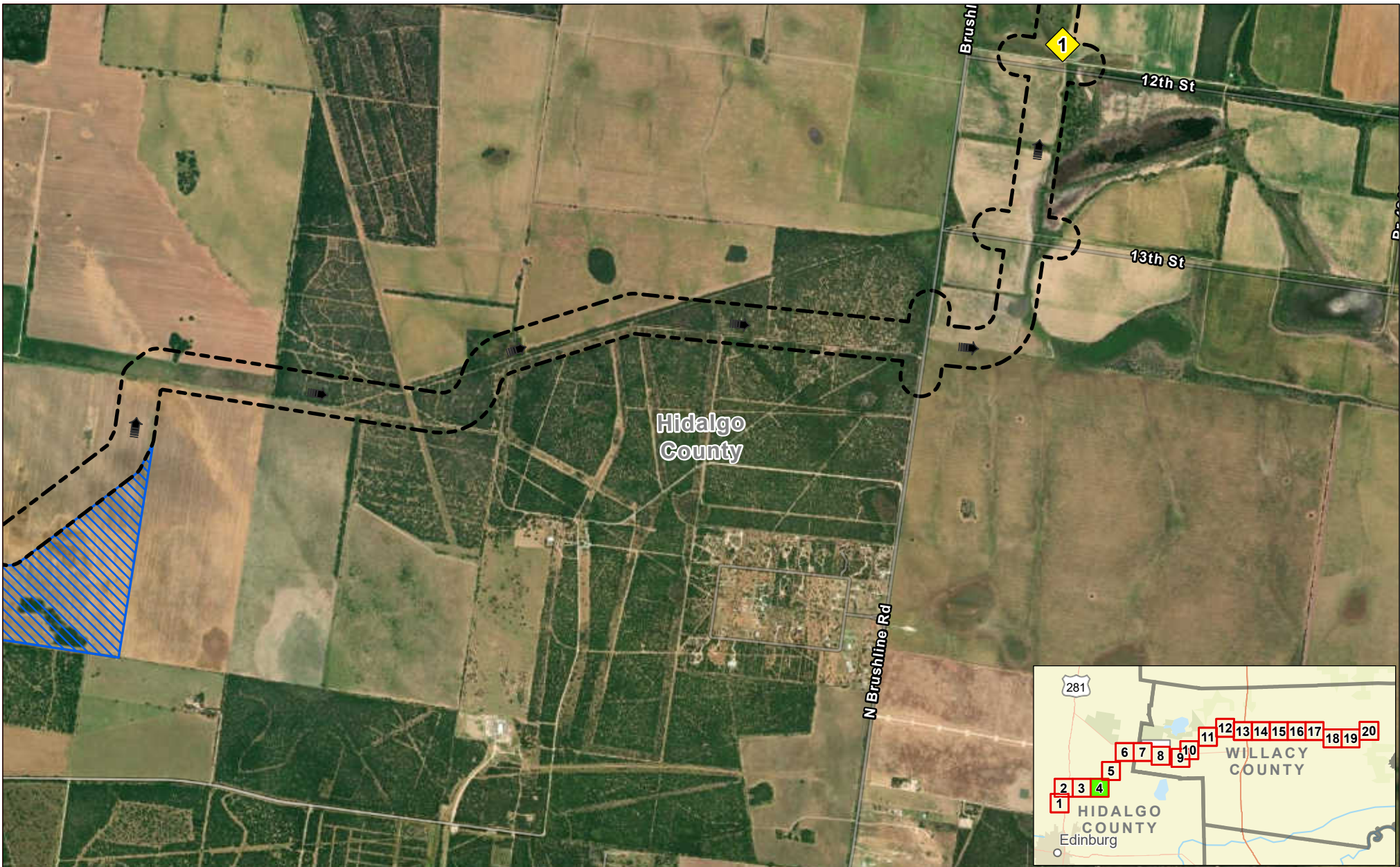


Exhibit 15 Alternative 1 Potential Hazardous Materials Sites Sheet 3 of 20 Raymondville Drain Project

Author : Joel F. Aguirre	Updated : 12/14/2023
DISCLAIMER: RRP Consulting Engineers makes no guarantees as to the accuracy of data used in the construction of this map.	

Path: S:\project\4408000_ProposedRaymondvilleDrain\Drawings\Drawings\Sheet_03.dwg



Legend:

- Study Corridor
- Drain Flow
- Proposed Detention Basin
- Unreported Sites

N

0 1,000 2,000

US Feet

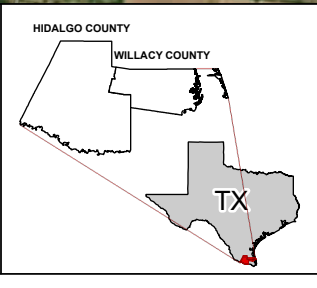
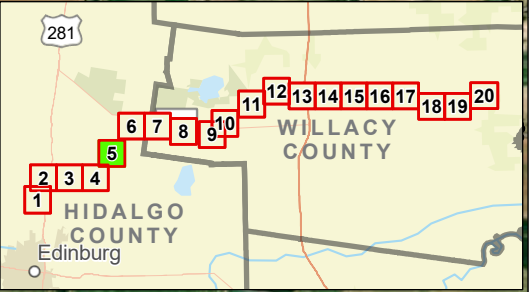
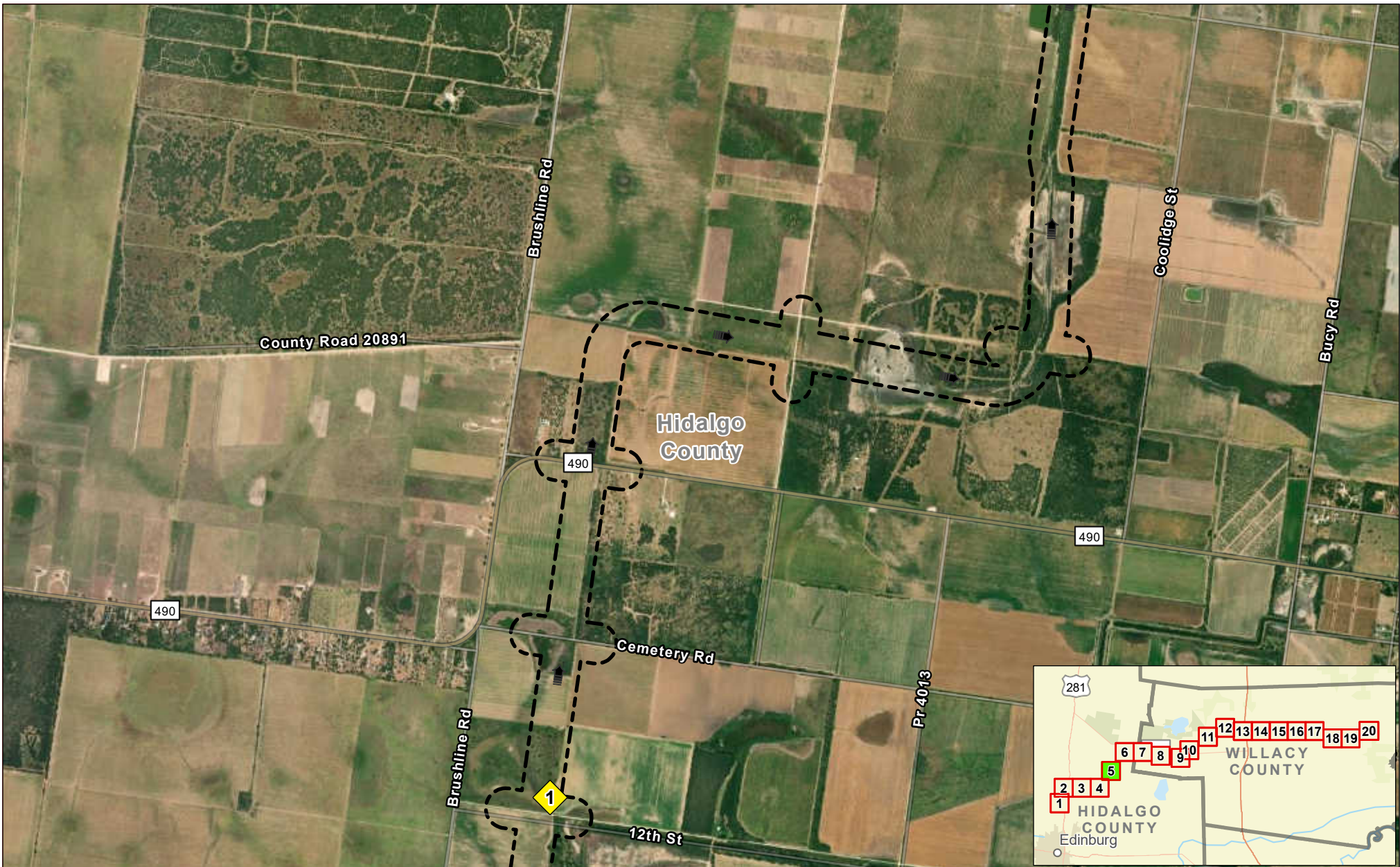


Exhibit 15 Alternative 1 Potential Hazardous Materials Sites Sheet 4 of 20 Raymondville Drain Project

Author : Joel F. Aguirre	Updated : 12/14/2023
--------------------------	----------------------

DISCLAIMER: RRP Consulting Engineers makes no guarantees as to the accuracy of data used in the construction of this map.

Path: S:\project\4408000_Project\Raymondville\GIS\PDF_Export\Exhibit_Series.aprx



Legend:

- Study Corridor
- Drain Flow
- Unreported Sites

N

0 1,000 2,000

US Feet

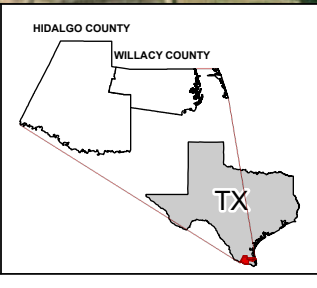


Exhibit 15 Alternative 1 Potential Hazardous Materials Sites Sheet 5 of 20 Raymondville Drain Project

Author : Joel F. Aguirre Updated : 12/14/2023

DISCLAIMER: RRP Consulting Engineers makes no guarantees as to the accuracy of data used in the construction of this map.

Path: S:\project\4408000_P\ProjectInventory\GIS\FOP_Encls-Encl_Series.aprx



Legend:

- Study Corridor
- Drain Flow
- County Boundary
- Reported Sites
- Unreported Sites

N

0 1,000 2,000

US Feet

HIDALGO COUNTY
WILLACY COUNTY

TX

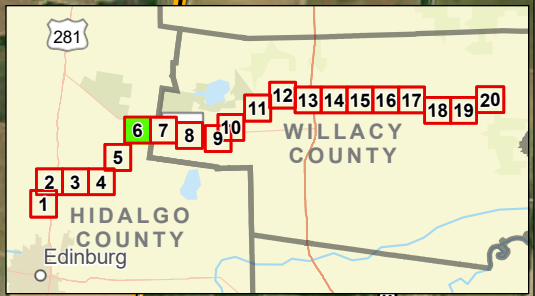
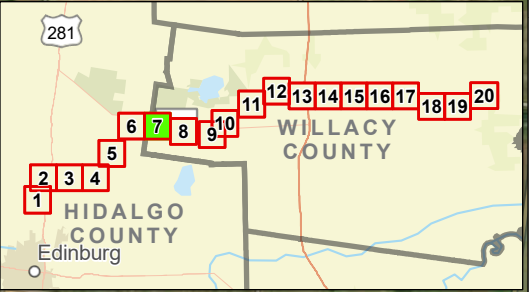


Exhibit 15 Alternative 1 Potential Hazardous Materials Sites Sheet 6 of 20 Raymondville Drain Project

Author : Joel F. Aguirre Updated : 12/14/2023

DISCLAIMER: RRP Consulting Engineers makes no guarantees as to the accuracy of data used in the construction of this map.

Path: S:\project\4408000_Project\Raymondville\GIS\FOP_Enables\Enables.aprx



Legend:

- Study Corridor
- Drain Flow
- County Boundary
- Reported Sites
- Unreported Sites

Data Provenance: ESRI Firefly Imagery (2023)

N

0 1,000 2,000
US Feet

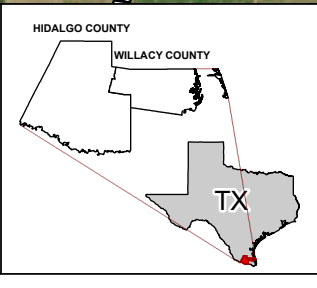
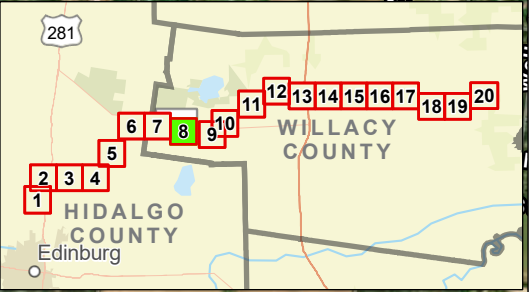
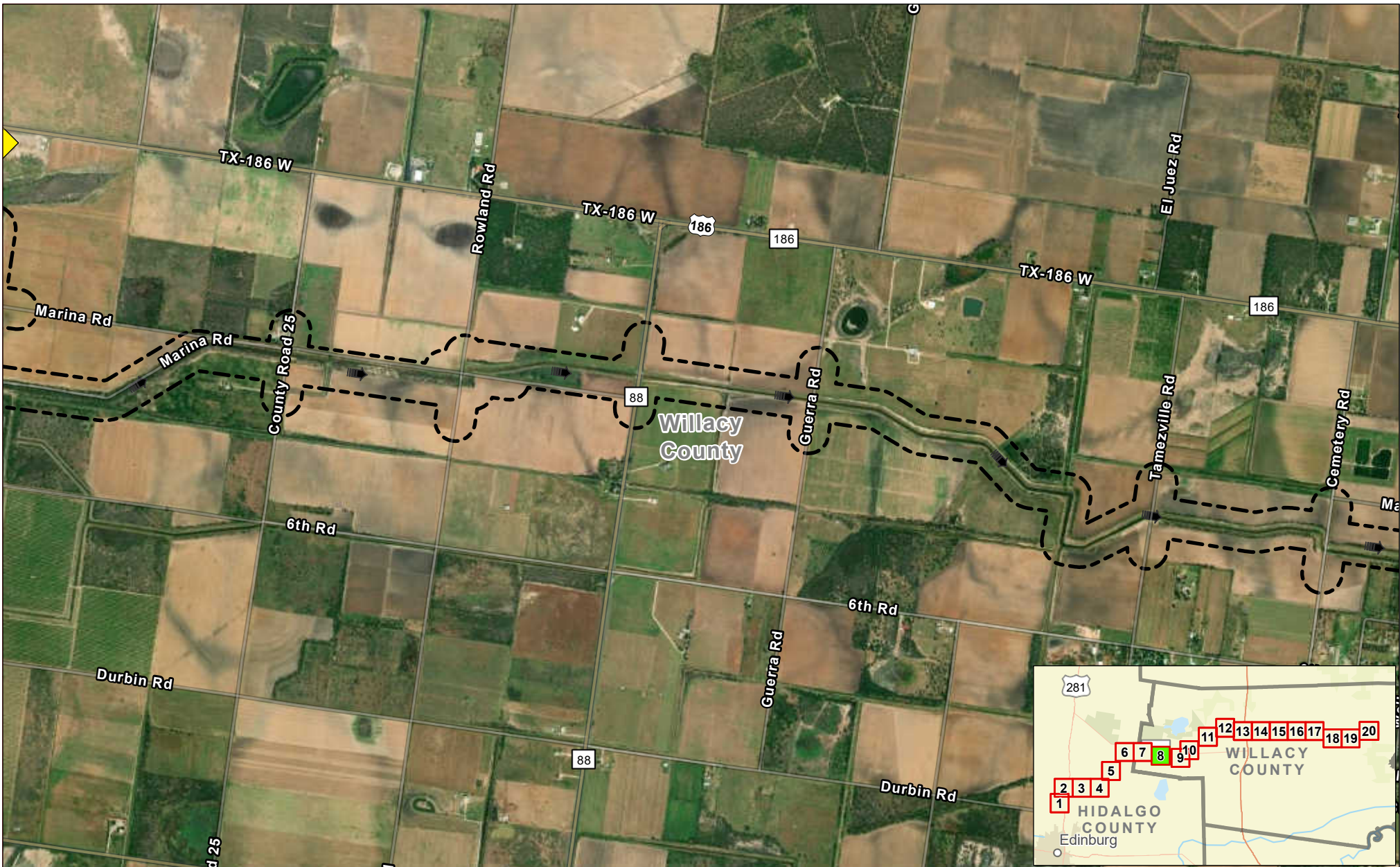


Exhibit 15 Alternative 1 Potential Hazardous Materials Sites Sheet 7 of 20 Raymondville Drain Project

Author : Joel F. Aguirre	Updated : 12/14/2023
DISCLAIMER: RRP Consulting Engineers makes no guarantees as to the accuracy of data used in the construction of this map.	

Path: S:\projects\4408000_Proposed\GIS\RRP_Encls\Encl_Series.aprx



Legend:

- Study Corridor
- Drain Flow
- Unreported Sites

Data Provenance: ESRI Firefly Imagery (2023)

N

0 1,000 2,000

US Feet

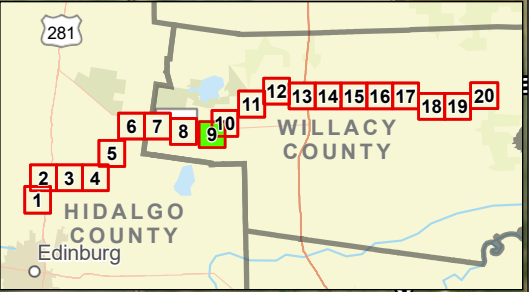
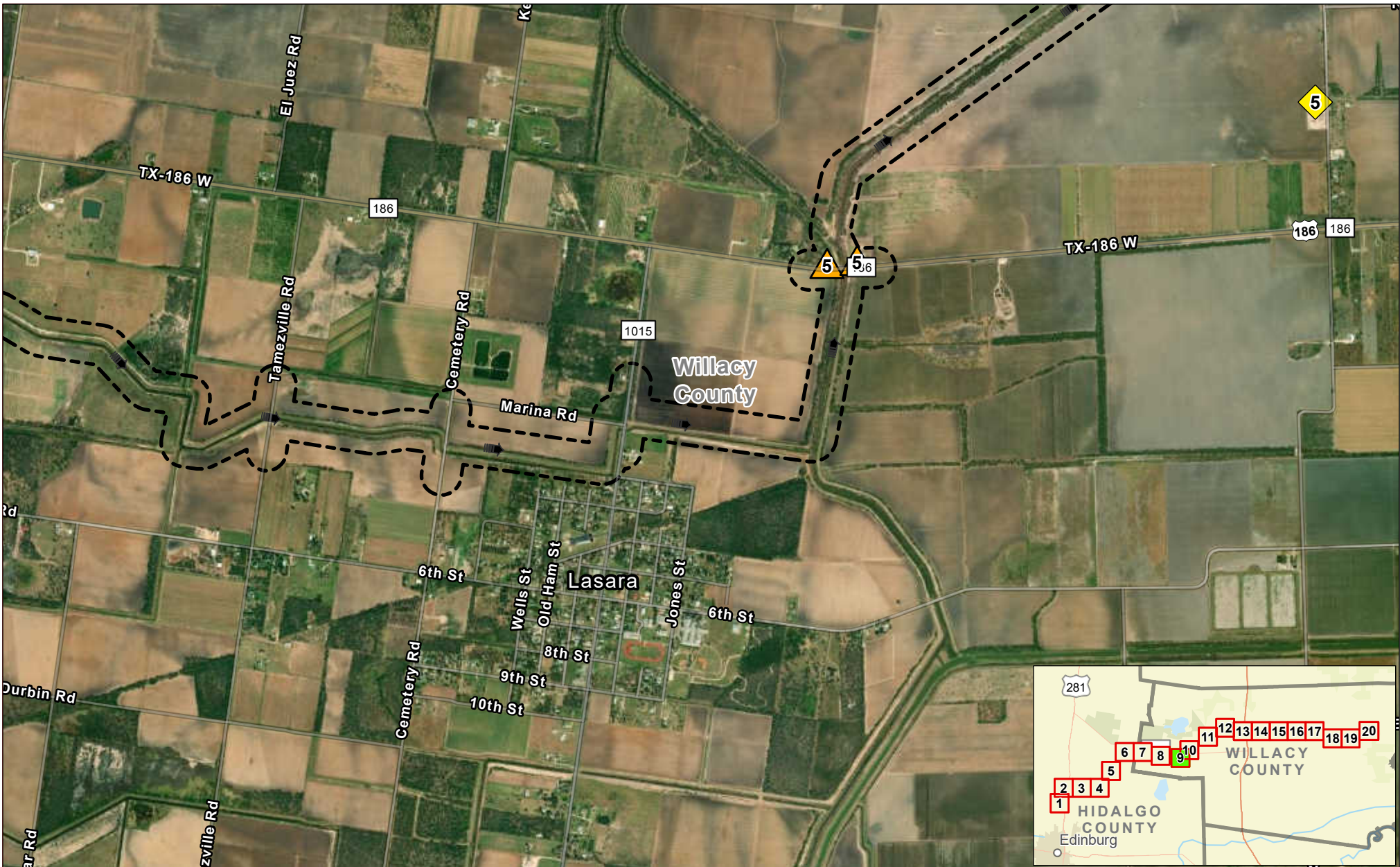
HIDALGO COUNTY
WILLACY COUNTY

TX

Exhibit 15 Alternative 1 Potential Hazardous Materials Sites Sheet 8 of 20 Raymondville Drain Project

Author : Joel F. Aguirre	Updated : 12/14/2023
<i>DISCLAIMER: RRP Consulting Engineers makes no guarantees as to the accuracy of data used in the construction of this map.</i>	

Path: S:\project\4408000_Prop\Inventory\GIS\PDF_Encls\Encl_Sheet8.aprx



Legend:

- Study Corridor
- Drain Flow
- Reported Sites
- Unreported Sites

N

0 1,000 2,000

US Feet

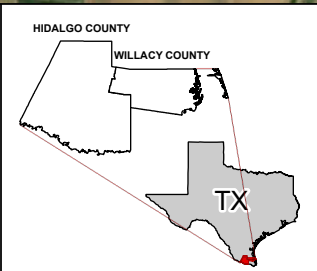
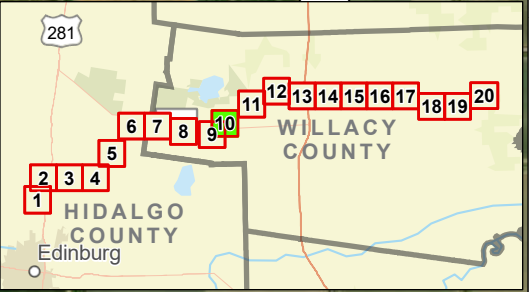


Exhibit 15 Alternative 1 Potential Hazardous Materials Sites Sheet 9 of 20 Raymondville Drain Project

Author : Joel F. Aguirre	Updated : 12/14/2023
--------------------------	----------------------

DISCLAIMER: RRP Consulting Engineers makes no guarantees as to the accuracy of data used in the construction of this map.

Path: S:\project\440800_Prop\Inventory\GIS\PDF_Encls\Encl_Sheet9.aprx



Legend:

- Study Corridor
- Drain Flow
- Reported Sites
- Unreported Sites

N

0 1,000 2,000

US Feet

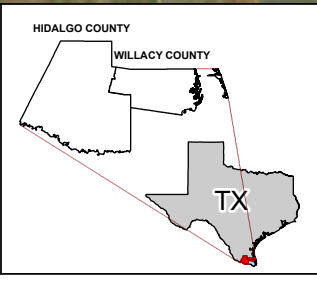
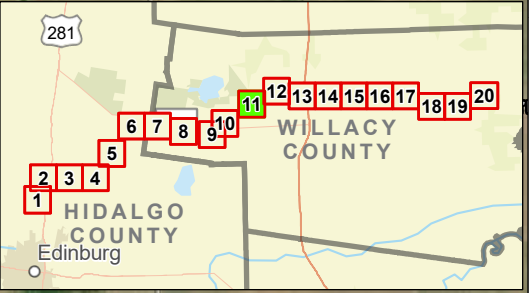


Exhibit 15 Alternative 1 Potential Hazardous Materials Sites Sheet 10 of 20 Raymondville Drain Project




Author : Joel F. Aguirre Updated : 12/14/2023

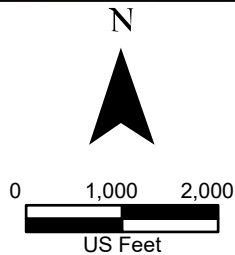
DISCLAIMER: RRP Consulting Engineers makes no guarantees as to the accuracy of data used in the construction of this map.

Path: S:\project\4408000_Proposed\GIS\PDF_Export\Ex15_Series.aprx



Legend:

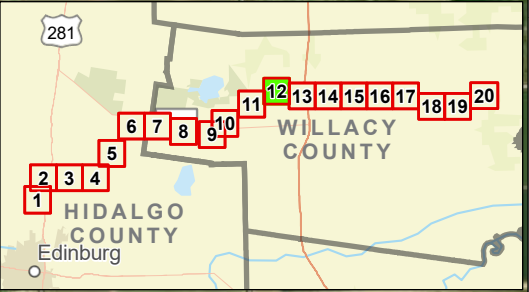
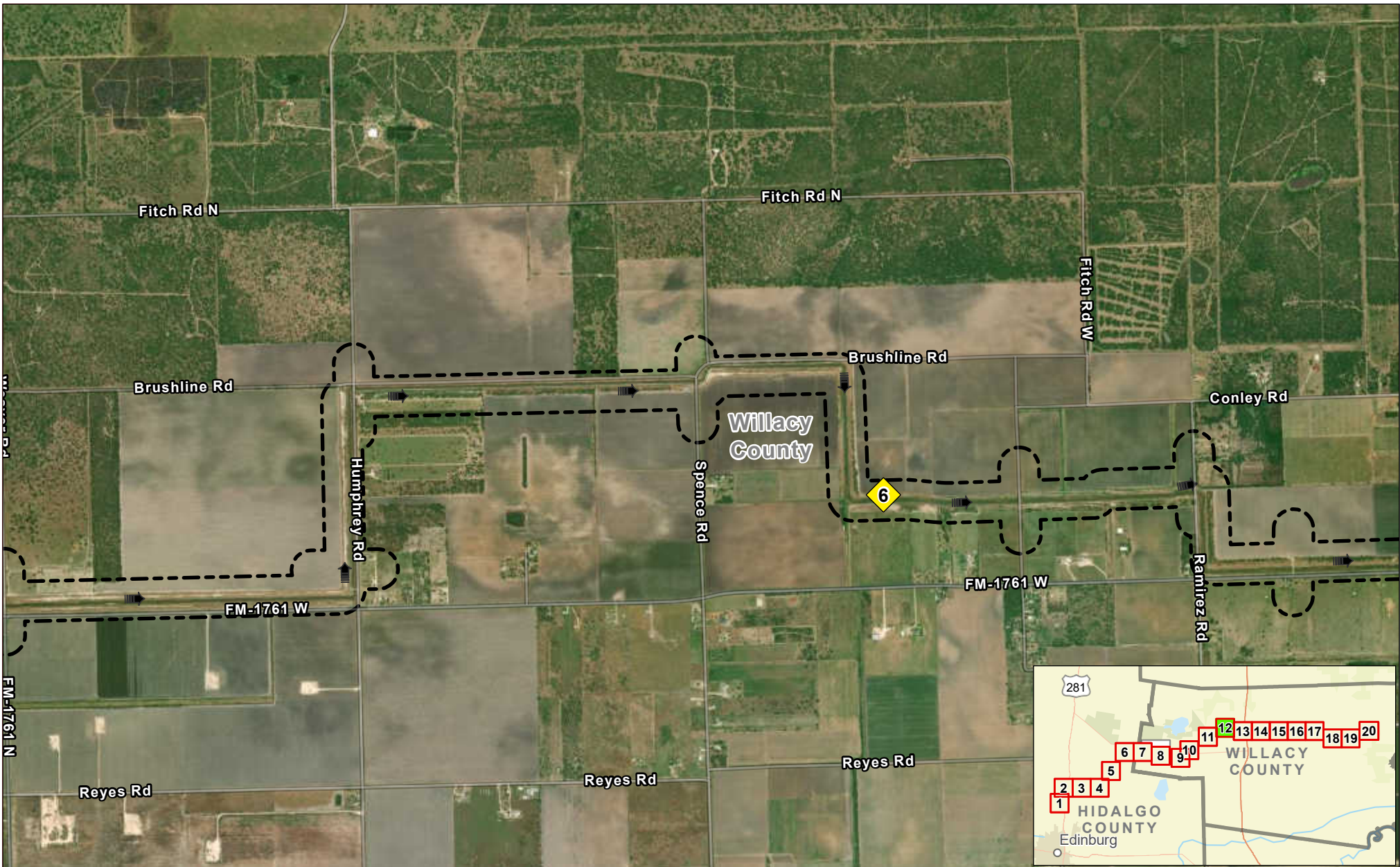
-  Study Corridor
-  Drain Flow
-  Reported Sites



**Exhibit 15
Alternative 1 Potential
Hazardous Materials Sites
Sheet 11 of 20
Raymondville Drain Project**

Author : Joel F. Aguirre Updated : 12/14/2023

DISCLAIMER: RRP Consulting Engineers makes no guarantees as to the accuracy of data used in the construction of this map.



Legend:

- Study Corridor
- Drain Flow
- Reported Sites
- Unreported Sites

Data Provenance: ESRI Firefly Imagery (2023)

N

0 1,000 2,000
US Feet

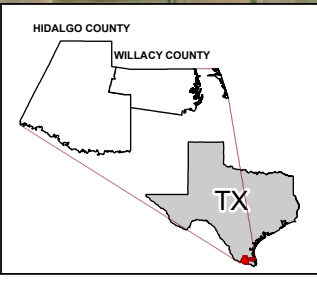
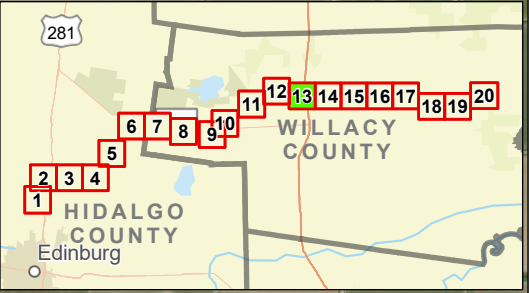
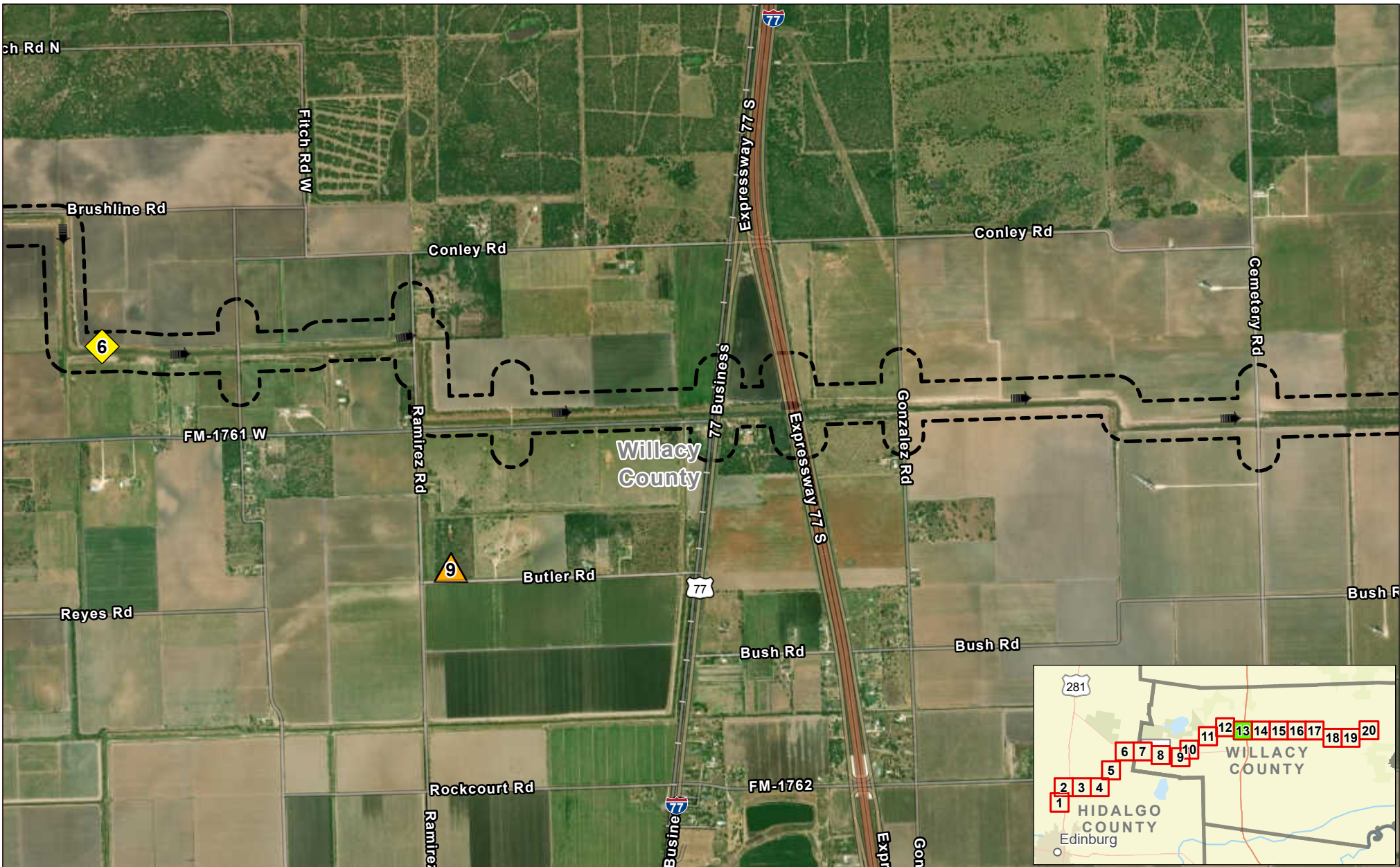


Exhibit 15 Alternative 1 Potential Hazardous Materials Sites Sheet 12 of 20 Raymondville Drain Project

Author : Joel F. Aguirre **Updated :** 12/14/2023

DISCLAIMER: RRP Consulting Engineers makes no guarantees as to the accuracy of data used in the construction of this map.

Path: S:\project\4408000_Project\Raymondville\GIS\FOP_Enables\Enables.aprx



Legend:

- Study Corridor
- Drain Flow
- Reported Sites
- Unreported Sites

Data Provenance: ESRI Firefly Imagery (2023)

N

0 1,000 2,000
US Feet

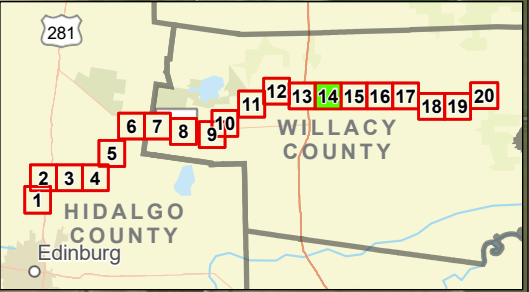
HIDALGO COUNTY
WILLACY COUNTY
TX

Exhibit 15 Alternative 1 Potential Hazardous Materials Sites Sheet 13 of 20 Raymondville Drain Project

Author : Joel F. Aguirre Updated : 12/14/2023

DISCLAIMER: RRP Consulting Engineers makes no guarantees as to the accuracy of data used in the construction of this map.

Path: S:\project\4408000_Project\Inventory\GIS\FOP_Enables\Enables.aprx



Legend:

- Study Corridor
- Drain Flow
- Unreported Sites

Data Provenance: ESRI Firefly Imagery (2023)

N

0 1,000 2,000

US Feet

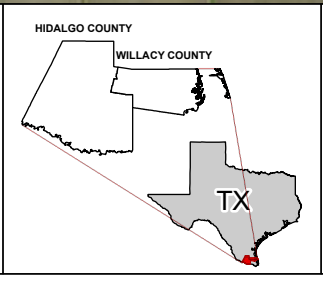


Exhibit 15 Alternative 1 Potential Hazardous Materials Sites Sheet 14 of 20 Raymondville Drain Project

Author : Joel F. Aguirre	Updated : 12/14/2023
<i>DISCLAIMER: RRP Consulting Engineers makes no guarantees as to the accuracy of data used in the construction of this map.</i>	

Path: S:\project\4408000_ProjectInventory\GIS\FOP_Enables\En1_Series.aprx



Legend:

- Study Corridor
- Drain Flow
- Unreported Sites

Data Provenance: ESRI Firefly Imagery (2023)

N

0 1,000 2,000

US Feet

HIDALGO COUNTY
WILLACY COUNTY
TX

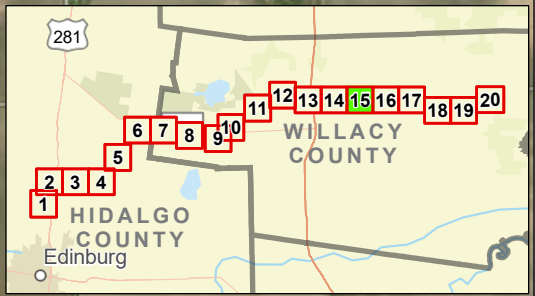
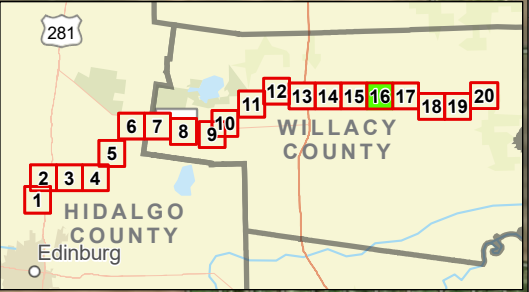
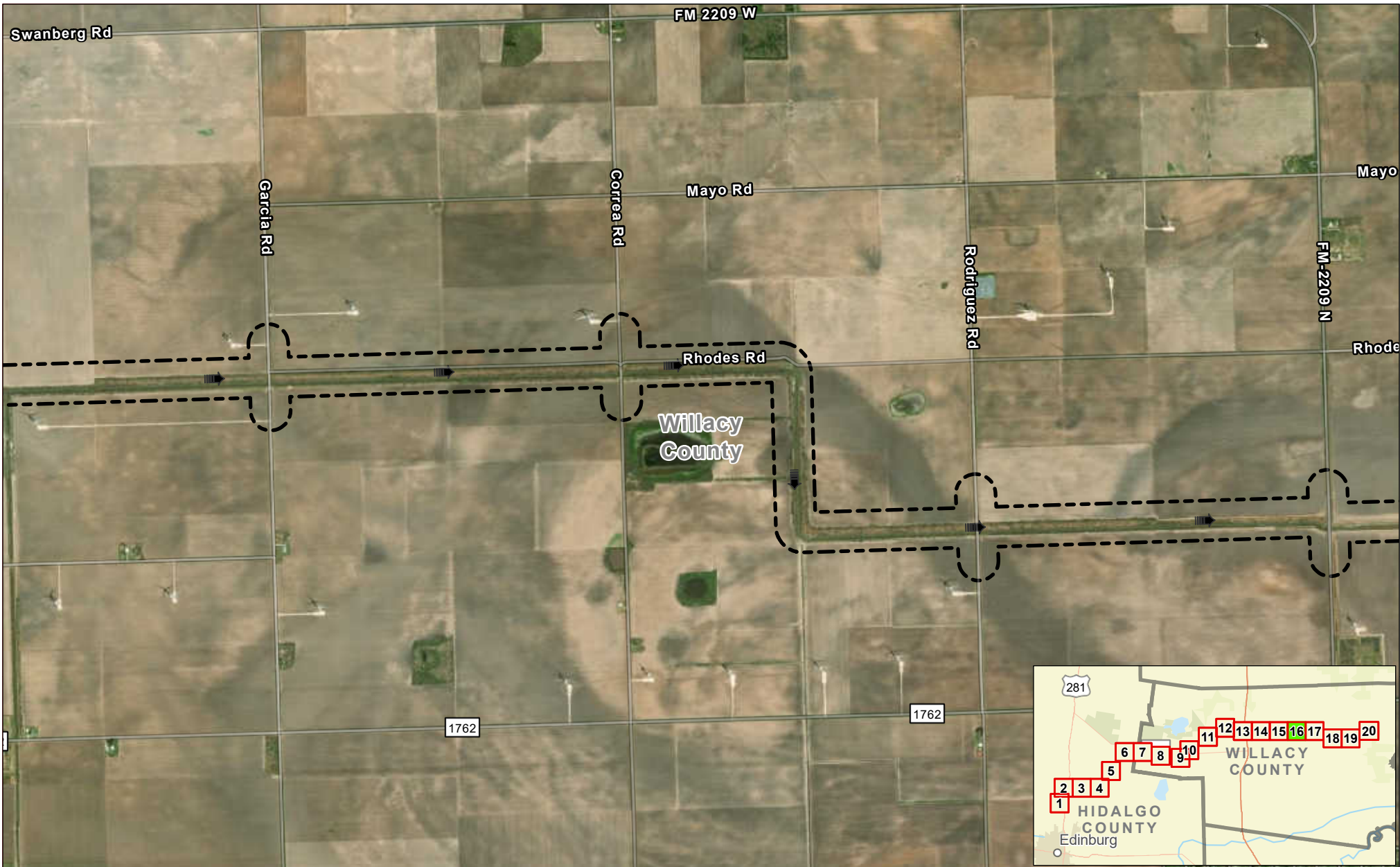


Exhibit 15 Alternative 1 Potential Hazardous Materials Sites Sheet 15 of 20 Raymondville Drain Project

Author : Joel F. Aguirre	Updated : 12/14/2023
---------------------------------	-----------------------------

DISCLAIMER: RRP Consulting Engineers makes no guarantees as to the accuracy of data used in the construction of this map.

Path: S:\project\3408000_Project\Raymondville\GIS\FOP_Enables\Enables_Series.aprx



Legend:

- Study Corridor
- Drain Flow

Data Provenance: ESRI Firefly Imagery (2023)

N

0 1,000 2,000

US Feet

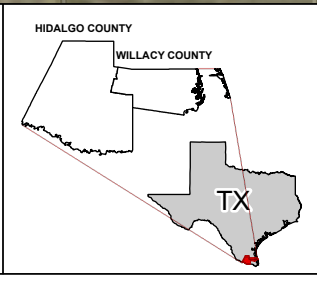
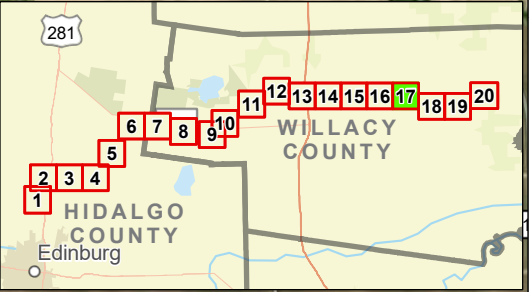


Exhibit 15 Alternative 1 Potential Hazardous Materials Sites Sheet 16 of 20 Raymondville Drain Project

Author : Joel F. Aguirre	Updated : 12/14/2023
<i>DISCLAIMER: RRP Consulting Engineers makes no guarantees as to the accuracy of data used in the construction of this map.</i>	

Path: S:\projects\4408000_ProjectRepository\GIS\DDP_Enables\Enables.aprx



Legend:

- Study Corridor
- Drain Flow

Data Provenance: ESRI Firefly Imagery (2023)

N

0 1,000 2,000

US Feet

HIDALGO COUNTY
WILLACY COUNTY

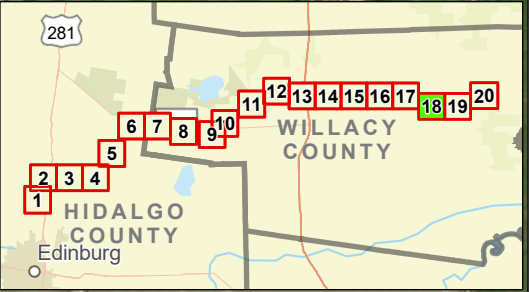
TX

Exhibit 15 Alternative 1 Potential Hazardous Materials Sites Sheet 17 of 20 Raymondville Drain Project

Author : Joel F. Aguirre **Updated :** 12/14/2023

DISCLAIMER: RRP Consulting Engineers makes no guarantees as to the accuracy of data used in the construction of this map.

Path: S:\project\4408000_Project\Raymondville\GIS\FOP_Encls\Encl_Series.aprx



Legend:

- Study Corridor
- Drain Flow

Data Provenance: ESRI Firefly Imagery (2023)

N

0 1,000 2,000

US Feet

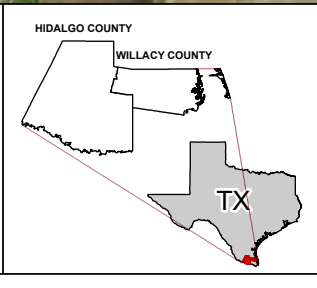
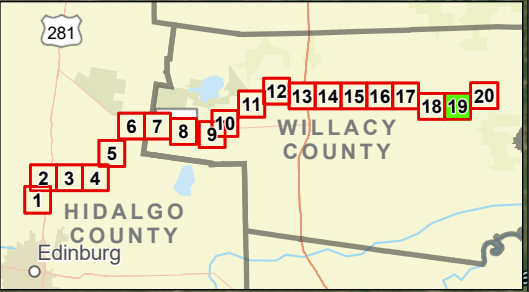
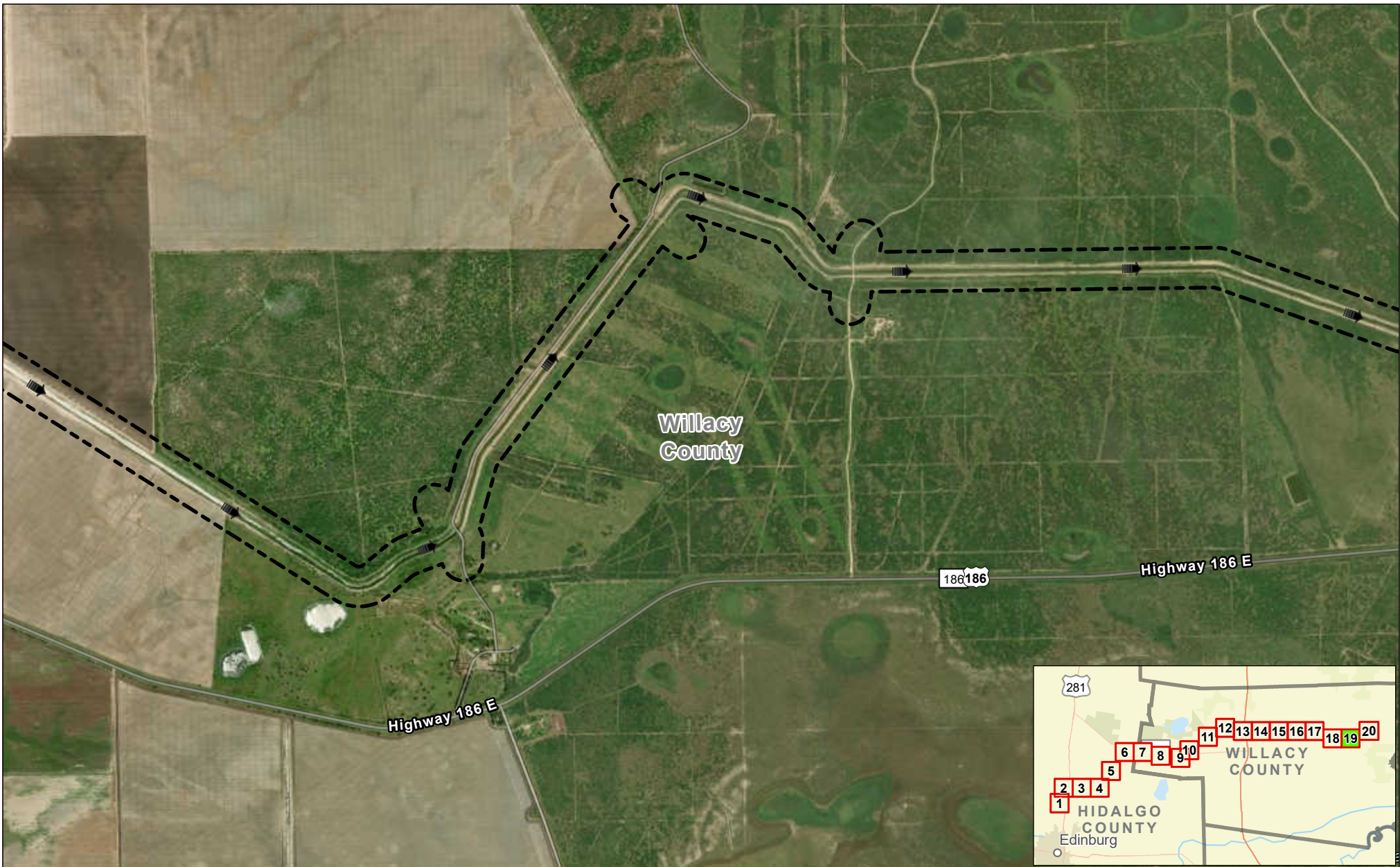


Exhibit 15 Alternative 1 Potential Hazardous Materials Sites Sheet 18 of 20 Raymondville Drain Project

Author : Joel F. Aguirre	Updated : 12/14/2023
<i>DISCLAIMER: RRP Consulting Engineers makes no guarantees as to the accuracy of data used in the construction of this map.</i>	

Path: S:\project\4408000_Project\Raymondville\GIS\FOP_Enables\Enables_Series.aprx



Legend:

- Study Corridor
- Drain Flow

N

0 1,000 2,000

US Feet

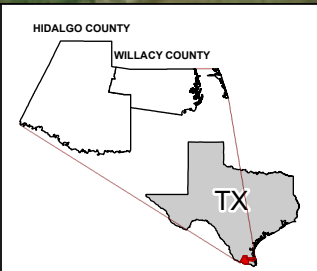
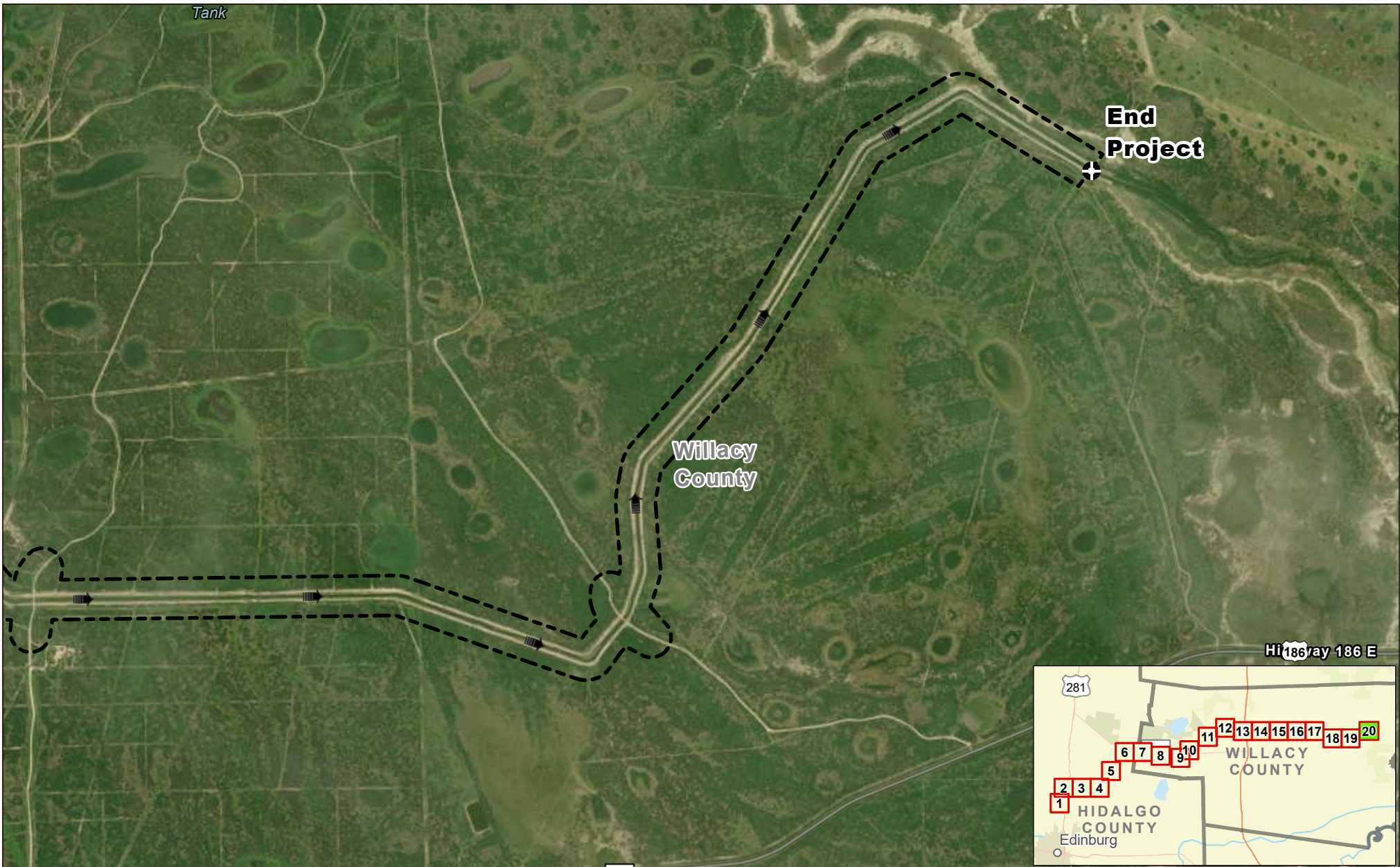


Exhibit 15 Alternative 1 Potential Hazardous Materials Sites Sheet 19 of 20 Raymondville Drain Project

Author : Joel F. Aguirre	Updated : 12/14/2023
DISCLAIMER: RRP Consulting Engineers makes no guarantees as to the accuracy of data used in the construction of this map.	

Path: S:\project\440800_Project\Raymondville\GIS\Map_Export\End_Series.aprx



Legend:

- Study Corridor
- Drain Flow

Data Provenance: ESRI Firefly Imagery (2023)

N

0 1,000 2,000

US Feet

HIDALGO COUNTY
WILLACY COUNTY

TX

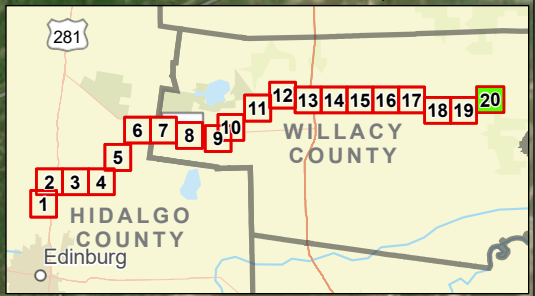


Exhibit 15 Alternative 1 Potential Hazardous Materials Sites Sheet 20 of 20 Raymondville Drain Project

Author : Joel F. Aguirre	Updated : 12/14/2023
<i>DISCLAIMER: RRP Consulting Engineers makes no guarantees as to the accuracy of data used in the construction of this map.</i>	

Path: S:\project\3408000_Project\Raymondville\GIS\FOP_Enables_End_Series.aprx